

# The Department of Recreation, Parks and Cultural Activities is asking for YOUR input about Ben Brenman and Boothe Parks

Beginning October 2012, The Department of Recreation, Parks and Cultural Activities is undertaking a nine-month public outreach process to identify the priorities for future park enhancements and uses in the City's large multi-use Parks. The Citywide Parks include Four Mile Run Park, Simpson Stadium Park, Chinquapin Park, Henlsey Park, Holmes Run Park, and Ben Brenman Park. The goal of this effort is to study and understand the existing conditions and future needs for each of the Parks.

Park Planning staff want to know how you use the parks, what you like about the parks, and what you hope to see in the parks in the future. Your input will help guide the plans and ultimately inform decisions on how the parks evolve over time.

Share your thoughts in the following ways:

## 1. Send us feedback! Scan this QR Code:



or visit <http://alexva.us/aw7> to provide feedback online.

OR

Take the survey on the back of this flyer. Marking up the map, show us how you use the Park and what improvements you hope to see.

You can scan and send it to [dana.wedeles@alexandriava.gov](mailto:dana.wedeles@alexandriava.gov) or send it by mail to Department of Recreation, Parks and Cultural Activities, Park Planning Division, City of Alexandria, 1108 Jefferson Street, Alexandria, VA 22314.

**2. Attend our Ben Brenman and Boothe Parks workshop:** November 14, 2012, 6:30pm at Samuel Tucker Elementary School, 435 Ferdinand Day Drive, Alexandria, VA 22304

We hope to hear from you!

For additional information, contact Dana Wedeles, Park Planner, at 703.746.5491 or [Dana.Wedeles@alexandriava.gov](mailto:Dana.Wedeles@alexandriava.gov).



# Tell us about Ben Brenman and Boothe Parks!

DRAW A LINE TO SHOW HOW YOU USUALLY ACCESS THE PARK.

WHAT MODE OF TRANSPORTATION DO YOU TYPICALLY USE TO ACCESS THE PARK?

SHOW OR LABEL WHERE AND WHAT ACTIVITIES YOU DO IN THE PARK.

WHAT DO YOU LIKE ABOUT THE PARK?

WHAT AREAS OF THE PARK DO YOU THINK NEED IMPROVEMENT?

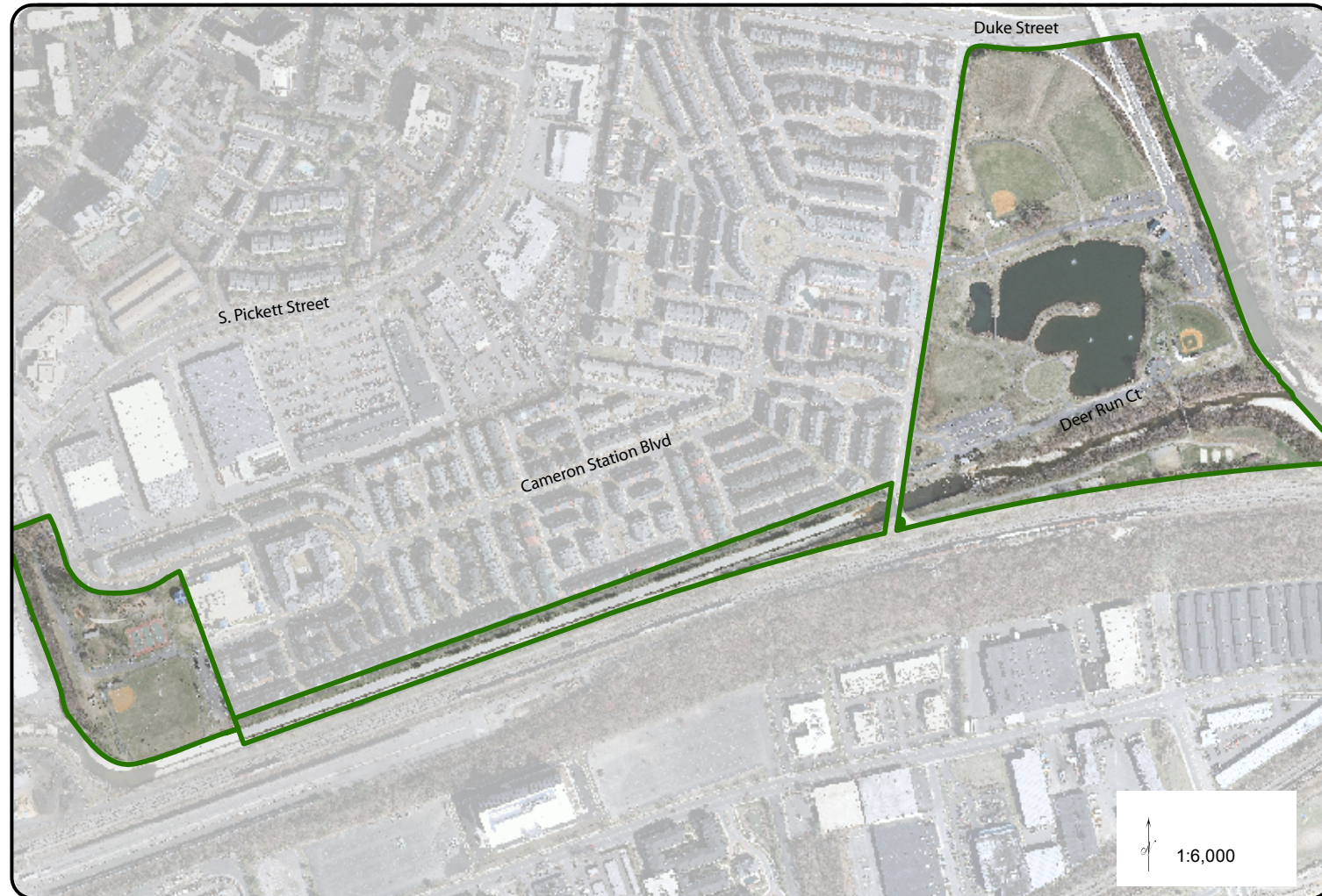
OF THE IMPROVEMENTS NEEDED, WHAT IS YOUR #1 PRIORITY FOR THE PARK?

HOW OFTEN DO YOU VISIT THE PARK?

WHAT IS YOUR AGE GROUP?

- UNDER 18
- 19-29
- 30-49
- 50-69
- 70 OR ABOVE

PLEASE PROVIDE YOUR CONTACT INFORMATION IF YOU WOULD LIKE TO BE CONTACTED IN THE FUTURE ABOUT THIS PARK PLANNING PROCESS.



DROP YOUR MAP IN THE DROP BOX AT THE PARK ENTRANCE OR SCAN AND SEND IT BY E-MAIL TO [DANA.WEdeles@ALEXANDRIAVA.GOV](mailto:DANA.WEdeles@ALEXANDRIAVA.GOV)  
YOU CAN ALSO SEND IT BY MAIL TO: PARK PLANNING, DEPARTMENT OF RECREATION, PARKS, AND CULTURAL ACTIVITIES  
1108 JEFFERSON STREET, ALEXANDRIA, VA 22314

